



Head's Update

Dear Parents and Carers,

It has been a busy and exciting week here at St Mary's, filled with various events and activities that I am delighted to share with you.

Our Year 5 children had the wonderful opportunity to participate in a Dance Festival at Shrewsbury High School. I want to extend my gratitude to the staff at Shrewsbury High School for providing such a fabulous experience for our students free of charge through their outreach programme. We are very grateful to be part of this programme which enriches the curriculum offer to the children.

Governor's Week was a success, with positive interactions between our governors, staff, and children. The governors were able to see all the children engaged in their learning and showcasing great recall of knowledge. They met with subject leaders to discuss the actions taken so far this year and the impact they have had on our school community.

On a similar note, we had an independent advisor visit our school on Friday to evaluate our curriculum offer and teaching and learning. The focus this term was reading and science. I am pleased to report that their feedback was very positive, echoing the sentiments shared by our governors.

This month, we celebrated the Month of the Military Child with a special assembly focusing on what it means to be a military child. It was heartening to listen to the children share their experiences. Everyone marked this special month by wearing purple stickers on Friday.

I would like to say a big thank you to our fundraising group for purchasing prizes and a cupboard for our new DoJo shop. The shop will be open next week, allowing children to use their dojo points earned in class to purchase items. In addition, I have pleasure to report that they have purchased two benches and solar lights in response to the safer schools survey. Once built, the benches will be positioned near the front entrance.

Please take the time to read page 2 of the newsletter which gives details of the government new regulation drive for school attendance and has indicated that all schools should be aiming for a minimum target of 95% for all pupils. This rate allows for periods of illness or particular circumstances when absence from school is unavoidable.

Wishing you a fabulous weekend

Sarah North
Headteacher

23rd April 2024

Dear Parents/Carers,

The government has set out its new regulation drive for schools attendance and has indicated that all schools should be aiming for a minimum target of **95%** attendance for all pupils. This rate allows for periods of illness or particular circumstances when absence from school is unavoidable.

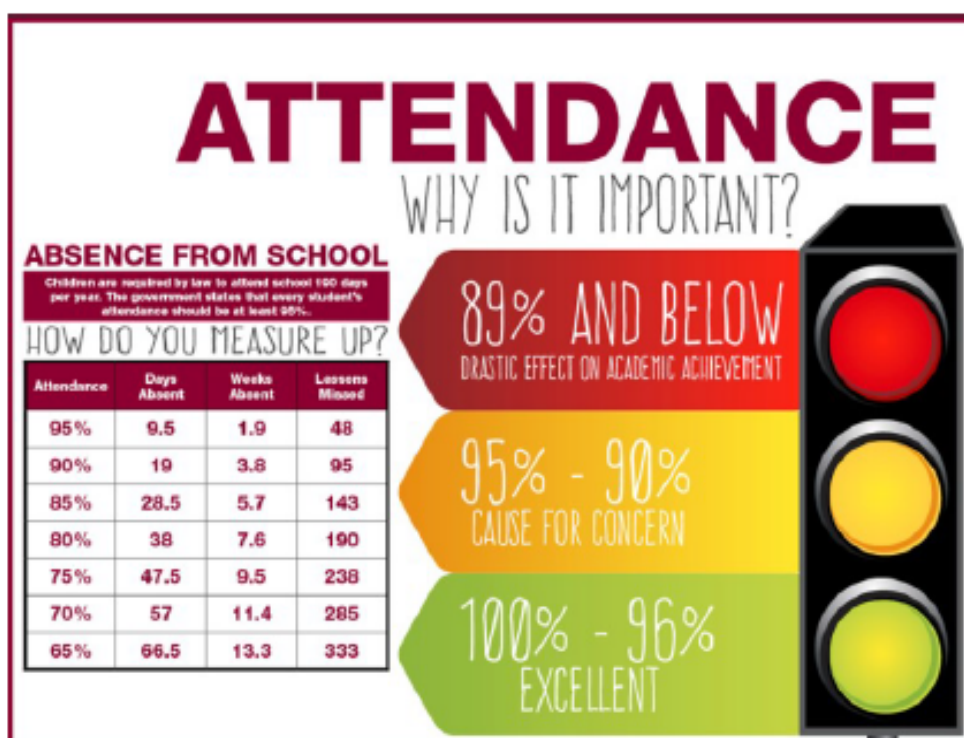
The law entitles every child of compulsory school age to an efficient, full-time education suitable to their age, aptitude, and any special educational need they may have. It is the legal responsibility of every parent to make sure their child receives that education either by attendance at a school or by education otherwise than at a school. Where parents decide to have their child registered at school, they have an additional legal duty to ensure their child attends that school regularly. This means their child must attend every day that the school is open, except in a small number of allowable circumstances such as being too ill to attend or being given permission for an absence in advance from the school.

Our Education Welfare Officer visits the school every half term to monitor the children's attendance and will make an action to parents if a child's attendance falls **below 95%**.

An Education Welfare Officer is a dedicated professional who plays a crucial role in promoting regular school attendance. EWOs visit schools to meticulously monitor attendance patterns. Their focus extends beyond mere numbers; they keenly observe signs that may indicate underlying challenges. By collaborating closely with school staff, parents, and students, EWOs provide invaluable support to enhance attendance. It's important to recognize that improved school attendance not only impacts academic outcomes but also contributes significantly to social and emotional well-being.

Should you have any enquiries regarding attendance or seek guidance, I encourage you to engage with your school, as they are well-equipped to assist you or speak to your school EWO, Jennie Graham - jennie.graham@shropshire.gov.uk

Thanks



Classes 6, 7 & 8 are attending **RAF Shawbury** for a **STEM** day (science, technology, engineering & maths) on **Monday 29th April**.

The RAF have kindly organised this for us for free. We will be walking to the RAF camp so your child will need to bring a waterproof coat.

Your child will also need to bring a packed lunch and drink with them in a small ruck sack they can carry around.

Other Upcoming Trips

Tuesday 7 May

Reception class visit St Mary's Church

Monday 20th May

Classes 6, 7, 8 & 9 to visit Muslim Centre

Wednesday 22nd May

Special visitor to work with classes 3, 4 & 5

Wednesday 22nd May

Reception class to visit Attingham Park

Monday 15th July

Class 10 to visit Parliament, London

Year 6 SATS Meeting – Monday 29th April @ 3.30pm

Year 6 – SATs Boosters and SATs Week

Please find details of the weeks building up to SAT week for children in year 6:

Week starting – 29th April

Monday 29th April – Friday 3rd May

Children to arrive every day at 7.45am for a prompt 8.00am start.

Breakfast will be served at 9.00am.

Week starting – 6th May

Monday 6th May (bank holiday)

Tuesday 7th May – Friday 10th May.

Children to arrive every day at 7.45am for a prompt 8.00am start

Breakfast will be served at 9.00am.

Week starting 13th May

During SATs week (beginning 13th May) we need your help to ensure:

- Children enter school at 8.35am
- The school is informed immediately of any health issues or illness.
- Children are in bed each night at a sensible time
- A healthy, nutritious breakfast to fuel them for the day ahead. (A breakfast cereal bar will be available in school)



Tyler Millan, in year 5, is taking part in the Pretty Mudder Race on 4th May 2024 to raise money for cancer research.

If anyone would like to sponsor him, please use the link below to go to Tyler's fundraising page.

<https://fundraise.cancerresearchuk.org/page/tylers-race-for-life-2149>

After school clubs

All after school clubs are running as normal next week apart from **Dance Club, which has been cancelled due to staff training.**

Shropshire Sings

This years Shropshire Sings take place on Monday 10th June.

Please consent on Arbor if your child is in the choir and is attending the Shropshire Sings event.

Please return ticket order forms by 13th May.

There are still places available in the choir if your child would like to join.



IT'S EVERYTHING A SCHOOL SHOULD BE...
TATLER SCHOOLS GUIDE

PREP | SENIOR | SIXTH

OPEN DAY
SAT 18 MAY, 10AM

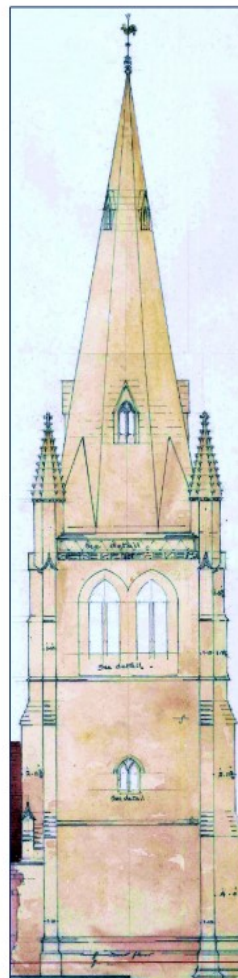
Moreton Hall  

www.moretonhall.org/open-day
Find out how much More your child can achieve...

'Outstanding' EYFS Provision
ISI INSPECTION REPORT 2023





CONCERT

in aid of
Cancer Research UK
and Clive Church

Given by young musicians
from Shrewsbury School

SATURDAY, 11 MAY
7 PM

ALL SAINTS' CHURCH
CLIVE

£12.50, £5, age 16 and under free

Book online at
www.buytickets.at/cliveconcert

For assistance:
cliveconcert@gmail.com
07386 893123



SCAN TO BOOK



Reminder - Monday 6th May is a Bank Holiday

PE Days - Summer Term 1

Nursery	Tuesday and Thursday
Class 1	Tuesday and Thursday
Class 3	Tuesday and Wednesday
Class 4	Tuesday and Wednesday
Class 5	Monday and Wednesday
Class 6	Monday and Friday
Class 7	Thursday and Friday
Class 8	Thursday and Friday
Class 9	Monday and Wednesday
Class 10	Monday and Wednesday

Shawbury Stars

Week commencing 29th April 2024

MONDAY	TUESDAY	WEDNESDAY	THURSDAY	FRIDAY
3:15PM - 4:15PM SNACK TIME/ KS1 PLAY GROUND	3:15PM - 4:15PM SNACK TIME/ KS1 PLAY GROUND	3:15PM - 4:15PM SNACK TIME/ KS1 PLAY GROUND	3:15PM - 4:15PM SNACK TIME/ KS1 PLAY GROUND	3:15PM - 4:15PM SNACK TIME/ KS1 PLAY GROUND
4:15PM -5.000pm Sports games. 	4.15pm-5.15pm Potato printing activity 	4:15PM - 5:00PM Decorating biscuits 	4:15PM - 5:00PM Play dough activity 	4:15pm-5:15pm Sport - Basketball 
5:00PM - 5:30PM LIGHT SNACK MEAL	5:00PM - 5:30PM LIGHT SNACK MEAL	5:00PM - 5:30PM LIGHT SNACK MEAL	5:00PM - 5:30PM LIGHT SNACK MEAL	4:45PM 5:10PM LIGHT SNACK MEAL
5:30PM - 6:00PM READING	5:30PM - 6:00PM READING	5:30PM - 6:00PM READING	5:30PM - 6:00PM READING	5:10PM - 5:30PM READING



LUNCH MENU



WEEK 1

08.04.24, 29.04.24,
20.05.24, 17.06.24, 08.07.24

WEEK 2

15.04.24, 07.05.24, 03.06.24,
24.06.24, 15.07.24

WEEK 3

22.04.24, 13.05.24,
10.06.24, 01.07.24

MONDAY

CHICKEN GOJONS
JACKET POTATO
QUORN BITES
HERBY DICED POTATO, NOODLES, BEANS
& GREEN BEANS
VANILLA SPONGE & CUSTARD

LASAGNE
JACKET POTATO
VEGGIE BOLOGNESE PASTA
PEAS, BROCCOLI & GARLIC BREAD
SELECTION OF COOKIES

SALMON FINGERS
JACKET POTATO
CHEESE & TOMATO PASTA BAKE
BROCCOLI, HERBY DICED POTATOES &
CARROTS
BROWNIE

TUESDAY

BOLOGNESE WITH WHOLEMEAL PASTA
JACKET POTATO
CHEESY PASTA
GARLIC BREAD, BEANS & SWEETCORN
FRUITY FLAPJACK

FISH SELECTION
JACKET POTATO
CHEESY BEAN & LENTIL BAKE
WHOLEMEAL PASTA, MASHED POTATO,
SWEETCORN & BEANS
CHOCOLATE SPONGE, CHOCOLATE SAUCE

CHILLI
JACKET POTATO
MACARONI CHEESE
50/50 RICE, SWEETCORN & CAULIFLOWER
SELECTION OF COOKIES

WEDNESDAY

ROAST BEEF
JACKET POTATO
LEEK & SWEET POTATO BAKE
ROAST POTATOES OR MASHED POTATOES
PEAS & BROCCOLI
SELECTION OF COOKIES

ROAST CHICKEN
JACKET POTATO
QUORN ROAST
ROAST POTATOES OR MASHED POTATO
CAULIFLOWER & CARROTS
ICED BUN

SAUSAGES
JACKET POTATO
VEGETARIAN SAUSAGES
MASHED/ ROAST POTATOES, PEAS &
GREEN BEANS
CHOCOLATE OR VANILLA MUFFINS

THURSDAY

CHICKEN CURRY
JACKET POTATO
VEGETABLE & CHICKPEA CURRY
50/50 RICE, NAAN BREAD,
CAULIFLOWER & PEAS
CHOCOLATE OR VANILLA MUFFINS

BIG BREAKFAST
JACKET POTATO
VEGETARIAN BREAKFAST
HASH BROWNS & SCRAMBLED EGG
MINI DOUGHNUTS

BURGER
JACKET POTATO
QUORN BURGER
WEDGES, SWEETCORN & PEAS.
EVES PUDDING & CUSTARD

FRIDAY

PEPPERONI PIZZA
JACKET POTATO
CHEESE & TOMATO PIZZA
CHIPS, BEANS & SWEETCORN
ICE CREAM

SAUSAGE PIZZA
JACKET POTATO
CHEESE & TOMATO PIZZA
CHIPS, BEANS & GREEN BEANS
FRUITY MUFFIN

HAM & PINEAPPLE PIZZA
JACKET POTATO
CHEESE & TOMATO PIZZA
CHIPS, BEANS & BROCCOLI
ICE CREAM



STARS OF THE WEEK

Seren
Williams

Annabelle
Hillier

Jacob
Stevens

Lottie
Stevens

Sienna
Ireland

Noah
Leonard

Jerome
Boateng

Esme
Simpson

Lilly
Gilbert

CONGRATULATIONS

Attendance during week starting – 22nd April 2024

Attendance Target – 96%

Attendance This Week – 95.988%

Attendance This Year – 94.7%

Children who missed morning registration 8.98% (23 children)

Over a school year, we are due to be open for 190 days which equates to 380 sessions.

A morning registration at the start of school – 8.45am and an afternoon registration after lunch—1pm for the afternoon session.

Attendance is affected if a pupil is not present at school for any whole session including registration.

It is important that the children are at school on time every day to prevent disruption and upset to their day and for the rest of their class.

Parent Fundraising Group

We are a small team of Parents who are keen to raise extra funds for our school. Throughout the year, we organise extra fun events (big and small) for our school children and wider community.

If you would be interested in joining us or willing to help at an event, please email us or find us on Facebook.

Summer Fair - Saturday 6th July - 12noon till 4pm

Contact details-

Email- fundraising.g@shawburystmarys.co.uk

Facebook- St Mary's Primary School Fundraising Group

House Points at St Mary's CE Primary School and Nursery

Peake	Rashford	Thunberg	Webster
			
343	453	390	366

St Mary's C of E Primary School & Nursery

Address: Poynton Road, Shawbury, Shropshire, SY4 4JR

Telephone: 01939 250323

Email: admin@shawburystmarys.co.uk

Website: www.shawburystmarys.org.uk



Diary Dates Summer Term 2024

Monday 29 th April	Year 3/4 STEM Trip – RAF Shawbury
Monday 29 th April	Year 6 SATS meeting for parents
Monday 6 th May	Bank Holiday
Friday 10 th May	Cricket workshop in school
Monday 13 th May to Thursday 16 th May	KS2 SATS week
Monday 20 th May	KS2 Mosque Trip, Shrewsbury
Monday 27 th May to Friday 31 st May	Half term break
Monday 3 rd June	Academy Photography in school
Thursday 6 th June	D Day 80 th Anniversary
Monday 10 th June	Shropshire Sings
Wednesday 12 th June	Father's Day Breakfast – All year groups
Friday 14 th June	RHSE Workshop to parents
Tuesday 18 th June	Sports Day
Thursday 20 th June	Nursery Open Day
Friday 21 st June	Sports Day – reserve date (1)
Tuesday 25 th June	Oracy Exhibition – PM
Wednesday 26 th June	Grandfather's Day Breakfast – All year groups
Friday 28 th June	Reports to parents (Reception-Year 5)
Monday 1 st July	New teacher letter to go out to parents
Monday 1 st /2 nd July	Year 6 Transition to secondary schools
Tuesday 2 nd July	Move on day – Reception – Year
Tuesday 2 nd July	Open Evening
Saturday 6 th July	Summer Fayre
Monday 8 th July	Sports Day – reserve date (2)
Tuesday 9 th July	Year 6 reports to parents
Wednesday 10 th July	Empower Trust Olympics at St Mary's
Friday 12 th July	Schools 10 th birthday celebrations PM
Monday 15 th July	Year 6 London trip
Tuesday 16 th July	Year 6 Prom
Thursday 18 th July	Year 6 End of year production
Friday 19 th July	End of year presentations and church service 9.30am