



Head's Update

Dear Parents and Carers,

A busy week for everyone at St Mary's.

Firstly, we had the honour of commemorating the 80th Anniversary of D-Day with personnel from RAF Shawbury. It was a humbling experience to hear serving personnel speak about the significance of D-Day, the importance of remembrance, and to witness our students march in solidarity as a class. The children were fascinated with the RAF Museum's artefacts and enjoyed interaction with them. A big thank you to the RAF from St Mary's for making this day very special.

Thank you to Bee U for attending our SEND Coffee Afternoon. It was a resounding success, with a fabulous turnout, and all parents were provided with valuable information to support their children's educational journey. Our next Coffee Afternoon is on Thursday 27th June with a specialist speaker from Autism West Midlands.

Excitement filled the air as Lassie, our furry friend, visited the school yesterday for the first time. She had her first assessment in a school environment. We are delighted to report that she performed exceptionally well, and will soon be able to work with small groups of children, fostering a nurturing and inclusive learning environment. The assessor will be visiting again before the end of term to evaluate our progress.

It was an honour to welcome the Trustees of Empower Trust to St Mary's. They were delighted to engage with our students, learn about their learning journey at St Mary's, learn more about St Mary's and have a tour of our school. It was a truly positive experience for all involved.

Our final thanks go to Lockheed Martin UK for their generous donation of tickets to the RAF Cosford Air Show. Well done to all the winners and we hope you have a wonderful day on Sunday as recognition of your entries to the 'RAF in a jar' competition. Amazing creativity!

Please support some of our Year 4 students who will be baking cakes and making loom bands to sell on Tuesday. They are raising funds for Down Syndrome and the homeless, exemplifying their compassion and desire to become agents of positive change.

Have a fabulous weekend.

Sarah North
Headteacher

Fathers Day Breakfasts

The Fathers Day breakfast on **Wednesday 12th June** is fully booked.

The breakfast will run between 8am and 9am, please drop in between these hours, last arrival 8.35am.

Please sign in at the school office and leave your mobile phone at home/car.

You will need to stay with your child until 8.35am when they can go into their class.

Grandfathers Day breakfast

Wednesday 26th June.

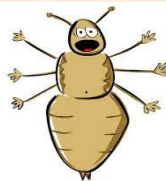
Places still available on Arbor

RSE Workshop

Miss Wade will be holding an RSE workshop for parents in the school hall on **Friday 14th June** at 8.45am.

If you would like to find out more about how we teach relationship and sex education in our school, before we teach the children this term, please come along.

Refreshments available.



We have had a couple of cases of headlice reported to us in school.

Please could you check your child's hair over the weekend and treat if necessary. Thanks

Shropshire Sings

Our choir are busy practising for their Shropshire Sings Concert which takes place on **Monday 10th June** at the West Mid Showground.

Your child brought home a letter earlier this week with full information for the event.

If you require more tickets for people to watch, these will now have to be purchased on the gate when you arrive at the event to watch.

Please ask at the school office if you have any questions

Year 5 Taster Day

Our year 5 children have been invited to taster day at Thomas Adams on

Wednesday 12th June.

You will need to transport your child to and from the taster day. Children do not need to come to St Marys on this day.

If your child is not attending they should come to school as usual.

Thanks

Nursery Music Sessions



Shropshire Music Service will be coming in to work with our nursery children on Monday next week and for the following four weeks for fun music sessions.

Sports Day

This years sports day will take place on **Tuesday 18th June** (weather depending)

KS2 Sports Day will take place in the morning - 9.15am start.

KS1 Sports Day will take place in the afternoon - 1.30pm start.

Refreshments will be available for you to purchase after both events.

Reserve sports day Friday 21st June

KS1 am and KS2 pm

Nursery open day

Our Nursery are holding an open day on **Thursday 20th June**.

If you have a toddler who will be looking to join our nursery in the Autumn term, please come along, meet the staff and have a look around.

This will be a drop in session between 9.30am - 11.30am and 12.30pm - 2.30pm

We look forward to seeing to

Academy Photos

Class photos and leaver photo proofs have come home with your child today.

Please send your orders into school by **Friday 21st June**

Non uniform

We will be holding a non-uniform day on **Friday 28th June** on behalf of the parent fundraising group.

Children can come to school in non-uniform and bring in a bottle and chocolate bar, which will be used on the summer fair tombola.

Next SEN Coffee Afternoon

will take place on

Thursday 27th June

2.30pm to 3.10pm

with specialist speaker from Autism West Midlands

Please let the office know if you will be attending.

After school clubs available this half term

Tuesday

KS2 Multi Sports Full

KS2 Dance Club 3 places available

Wednesday

KS1 Multi Sports 4 places available

Thursday

KS2 Tennis 8 places available

KS1 Arts & Craft Club 1 place available

(4 weeks only)

All clubs are charged at £4 per session. Please book your place on Arbor.

Fundraising Cake Sale



Milla, Lucy, Alys, Elinor, Charlie, Noah, Ruby, Rory and Mia from year 4 are organising a cake sale in aid of Down Syndrome and a local Homeless Charity.

They will be selling cakes and loom bands on Tuesday 11th June.

Cakes are 50p each

Loom band bracelets are £1 each

Loom band rings are 50p each

The items will be sold during lunchtime on Tuesday next week.

They hope to raise around £250 for the above charities.

Please bring money to school on Tuesday if you wish to support this event.



FATHER'S DAY

Gift Shop

FRIDAY 14TH JUNE

A VARIETY OF GIFTS WILL BE ON SALE FOR YOUR CHILDREN TO CHOOSE FROM READY FOR FATHER'S DAY ON SUNDAY 16TH JUNE.

COST £2 PER ITEM.

PLEASE BRING CASH ON THE DAY IN A SEALED ENVELOPE CLEARLY LABELED WITH AMOUNT & NUMBER OF ITEMS TO BE PURCHASED THANK YOU



Shropshire
Primary Partnership

University of
Chester



Train to Teach in Shropshire with Shropshire Primary Partnership - Lead School Partner Route

Join a dynamic teacher training initiative with Shropshire Primary Partnership's Lead School Partner route. Our intensive one-year PGCE programme, validated by the University of Chester, offers comprehensive preparation for aspiring educators. Benefit from high-calibre training within Shropshire schools, with a focus on school-based learning and hands-on experience from day one.

- Collaborate with prestigious schools across Shropshire.
- Gain essential skills and knowledge for a successful teaching career.
- Emphasis on school-based learning for confidence and effectiveness.
- Complete three placements in different key stages.
- Early Primary and General Primary pathways available.

For more information and to apply, visit:

admin@shropshireprimarypartnership.co.uk

www.shropshireprimarypartnership.co.uk

@SPPPartnership

Wide range of immersive practical experiences to enhance our subject knowledge, with practical opportunities with Art, D&T and outdoor learning.

Testimonials from some past students

Personalised course tailored to us. Felt valued and supported and as a result are prepared, resilient and enthusiastic.

"I completed my PGCE and DTG through Shropshire Primary Partnership. I am now working as a Year 2 teacher in one of the partner schools I trained in. I thoroughly enjoy my job and am lucky to be working with such a supportive team. I would highly recommend this course to anyone considering a career in teaching." One of our teachers who qualified last year.

"Being a teacher is something I always dreamt of but never felt would be possible with a disability. I am deaf, a bilateral hearing aid wearer and during my PGCE, with the support of my course facilitator Greg and Chester University, I was diagnosed as dyslexic. Greg was very supportive ensuring that the course sessions he ran were as inclusive as possible. He liaised with other course tutors and placement schools on my behalf to ensure that adaptations, where necessary, were in place for me to succeed. I loved every second of the PGCE course and, despite the challenges, I can look back and smile."



Shropshire Primary Partnership is a core partner with Shropshire and Telford Education Partnership

JOIN US FOR OUR ANNUAL
Summer Fair
SATURDAY 6TH JULY
12 TO 4PM

FREE ENTRY

Join us for lots of fun including

- *Bouncy castle*
- *Ice-cream van*
- *Craft stalls*
- *Fun games*
- *BBQ*
- *Tombola*
- *Glitter face painting*
- and much much more!

ST MARY'S CE PRIMARY SCHOOL
POYNTON ROAD, SHAWBURY SY4 4JR






PE DAYS - SUMMER 2

PLEASE NOTE SOME DAYS HAVE CHANGED

Nursery	Tuesday and Thursday
Class 1	Tuesday and Thursday
Class 3	Tuesday and Friday
Class 4	Tues and Wednesday
Class 5	Monday and Friday
Class 6	Monday and Wednesday
Class 7	Thursday and Friday
Class 8	Thursday and Friday
Class 9	Monday and Wednesday
Class 10	Monday and Wednesday

Shawbury Stars

Monday 10th June 2024

MONDAY	TUESDAY	WEDNESDAY	THURSDAY	FRIDAY
3:15PM - 4:15PM SNACK TIME/ KS1 PLAY GROUND	3:15PM - 4:15PM SNACK TIME/ KS1 PLAY GROUND	3:15PM - 4:15PM SNACK TIME/ KS1 PLAY GROUND	3:15PM - 4:15PM SNACK TIME/ KS1 PLAY GROUND	3:15PM - 4:15PM SNACK TIME/ KS1 PLAY GROUND
4:15PM -5.000pm Play bingo 	4.15pm-5:00pm Rounders 	4:15pm-5:15pm Arts and crafts 	4:15PM - 5:00PM Chalking outside 	4:15pm-5:15pm Outside sports 
5:00PM - 5:30PM LIGHT SNACK MEAL	5:00PM - 5:30PM LIGHT SNACK MEAL	5:00PM - 5:30PM LIGHT SNACK MEAL	5:00PM - 5:30PM LIGHT SNACK MEAL	4:45PM 5:10PM LIGHT SNACK MEAL
5:30PM - 6:00PM READING	5:30PM - 6:00PM READING	5:30PM - 6:00PM READING	5:30PM - 6:00PM READING	5:10PM - 5:30PM READING

Attendance during week starting – 3rd June 2024

Attendance Target – 96%

Attendance This Week – 94.5%

Attendance This Year – 94.9%

Children who missed morning registration 7% (18 children)

Over a school year, we are due to be open for 190 days which equates to 380 sessions.

A morning registration at the start of school – 8.45am and an afternoon registration after lunch—1pm for the afternoon session.

Attendance is affected if a pupil is not present at school for any whole session including registration.

It is important that the children are at school on time every day to prevent disruption and upset to their day and for the rest of their class.

Parent Fundraising Group

We are a small team of Parents who are keen to raise extra funds for our school. Throughout the year, we organise extra fun events (big and small) for our school children and wider community.

If you would be interested in joining us or willing to help at an event, please email us or find us on Facebook.

Contact details-

Email- fundraising.g@shawburystmarys.co.uk

Facebook- St Mary's Primary School Fundraising Group



LUNCH MENU



WEEK 1 08.04.24, 29.04.24, 20.05.24, 17.06.24, 08.07.24	WEEK 2 15.04.24, 07.05.24, 03.06.24, 24.06.24, 15.07.24	WEEK 3 22.04.24, 13.05.24, 10.06.24, 01.07.24
--	--	--

MONDAY	CHICKEN GOJONS JACKET POTATO QUORN BITES HERBY DICED POTATO, NOODLES, BEANS & GREEN BEANS VANILLA SPONGE & CUSTARD	LASAGNE JACKET POTATO VEGGIE BOLOGNESE PASTA PEAS, BROCCOLI & GARLIC BREAD SELECTION OF COOKIES	SALMON FINGERS JACKET POTATO CHEESE & TOMATO PASTA BAKE BROCCOLI, HERBY DICED POTATOES & CARROTS BROWNIE
TUESDAY	BOLOGNESE WITH WHOLEMEAL PASTA JACKET POTATO CHEESY PASTA GARLIC BREAD, BEANS & SWEETCORN FRUITY FLAPJACK	FISH SELECTION JACKET POTATO CHEESY BEAN & LENTIL BAKE WHOLEMEAL PASTA, MASHED POTATO, SWEETCORN & BEANS CHOCOLATE SPONGE, CHOCOLATE SAUCE	CHILLI JACKET POTATO MACARONI CHEESE 50/50 RICE, SWEETCORN & CAULIFLOWER SELECTION OF COOKIES
WEDNESDAY	ROAST BEEF JACKET POTATO LEEK & SWEET POTATO BAKE ROAST POTATOES OR MASHED POTATOES PEAS & BROCCOLI SELECTION OF COOKIES	ROAST CHICKEN JACKET POTATO QUORN ROAST ROAST POTATOES OR MASHED POTATO CAULIFLOWER & CARROTS ICED BUN	SAUSAGES JACKET POTATO VEGETARIAN SAUSAGES MASHED/ ROAST POTATOES, PEAS & GREEN BEANS CHOCOLATE OR VANILLA MUFFINS
THURSDAY	CHICKEN CURRY JACKET POTATO VEGETABLE & CHICKPEA CURRY 50/50 RICE, NAAN BREAD, CAULIFLOWER & PEAS CHOCOLATE OR VANILLA MUFFINS	BIG BREAKFAST JACKET POTATO VEGETARIAN BREAKFAST HASH BROWNS & SCRAMBLED EGG MINI DOUGHNUTS	BURGER JACKET POTATO QUORN BURGER WEDGES, SWEETCORN & PEAS. EVES PUDDING & CUSTARD
FRIDAY	PEPPERONI PIZZA JACKET POTATO CHEESE & TOMATO PIZZA CHIPS, BEANS & SWEETCORN ICE CREAM	SAUSAGE PIZZA JACKET POTATO CHEESE & TOMATO PIZZA CHIPS, BEANS & GREEN BEANS FRUITY MUFFIN	HAM & PINEAPPLE PIZZA JACKET POTATO CHEESE & TOMATO PIZZA CHIPS, BEANS & BROCCOLI ICE CREAM



STARS OF THE WEEK

**Oliver
Davies**

**Jessica
Barnett**

**Ellie
Wright**

**Emily
Powell**

**Charlie
Evans**

**Ruby
Thomas**

**Dakota
Davies**





**Archie
Cooke**

**Demi
Cash**

CONGRATULATIONS

Diary Dates Summer Term 2024

Monday 10 th June	Shropshire Sings
Wednesday 12 th June	Year 5 Taster Day—Thomas Adams
Wednesday 12 th June	Father's Day Breakfast – All year groups
Friday 14 th June	RHSE Workshop to parents
Tuesday 18 th June	Sports Day
Thursday 20 th June	Nursery Open Day
Friday 21 st June	Sports Day – reserve date (1)
Tuesday 25 th June	Oracy Exhibition – PM
Wednesday 26 th June	Grandfather's Day Breakfast – All year groups
Thursday 27 th June	SEND Coffee afternoon—Autism West Midlands
Friday 28 th June	Reports to parents (Reception-Year 5)
Friday 28 th June	Non uniform - bring a bottle and bar
Monday 1 st July	New teacher letter to go out to parents
Monday 1 st /2 nd July	Year 6 Transition to secondary schools
Tuesday 2 nd July	Move on day – Reception – Year
Tuesday 2 nd July	Open Evening
Saturday 6 th July	Summer Fayre
Monday 8 th July	Sports Day – reserve date (2)
Tuesday 9 th July	Year 6 reports to parents
Wednesday 10 th July	Empower Trust Olympics at St Mary's
Friday 12 th July	Schools 10 th birthday celebrations PM
Monday 15 th July	Year 6 London trip
Tuesday 16 th July	Year 6 Prom
Thursday 18 th July	Year 6 End of year production
Friday 19 th July	End of year presentations and church service 9.30am

House Points at St Mary's CE Primary School and Nursery			
Peake	Rashford	Thunberg	Webster
			
812	888	885	819



St Mary's C of E Primary School & Nursery

Address: Poynton Road, Shawbury, Shropshire, SY4 4JR

Telephone: 01939 250323

Email: admin@shawburystmarys.co.uk

Website: www.shawburystmarys.org.uk

